

Au.diGroove™ data sheet

Product Description

A premium acoustic paneling system that offers a host of options both in appearance and performance. Installed in tongue & plank form, this product provides an attractive continuous grooved look. With the Integrated Acoustic Backing (IAB) and an air gap or insulation, this product is suitable for high performance acoustic applications or purely as decorative paneling.

Product Features & Variations

- Great combination of acoustics & aesthetics
- Simple tongue & groove installation
- Easy to handle, transport, and store
- Demountable & Reusable
- Various profiles for maximum design & acoustic flexibility
- Standard plank width of 192mm (7-9/16")
- Standard nominal plank lengths of 2438mm (8') & 3048mm (10') are available, to be cut on site as required.
- Standard black Integrated Acoustic Backing (IAB)

Fire Rating

Standard Au.diGroove™ components meet or exceed Class C fire rating. If Class A fire rating is required, all components of the product will conform to CAN/ULC test standards.

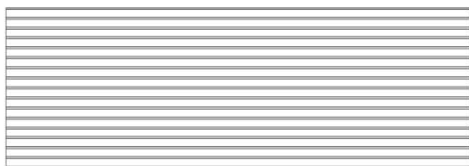
- FR MDF: CAN/ULC-S102 & ASTM-E84 Class A
- Standard IAB: CAN/ULC-S102 & ASTM-E84 Class A

Profiles

Au.diGroove is available in 6 standard profiles as illustrated below. Reflective versions of these acoustic profiles can be achieved by removing the intersecting acoustic perforations on the backs of the planks. Contact Atkar Technical Staff for custom configurations, such as large-format panels & lay-in ceiling tiles.

Code	Open Area	Groove Width	Groove Spacing (centre-to-centre)
AG10-280	7.7%	2mm	8mm
AG11-380	11.5%	3mm	8mm
AG18-216	7.8%	2mm	16mm
AG19-316	11.5%	3mm	16mm
AG20-416	15.2%	4mm	16mm
AG36-432	7.6%	4mm	32mm

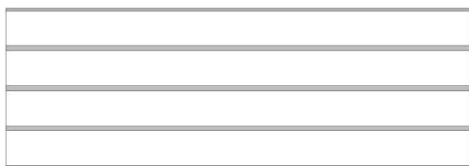
AG10-280



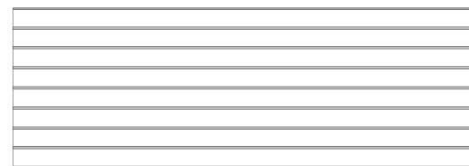
AG11-380



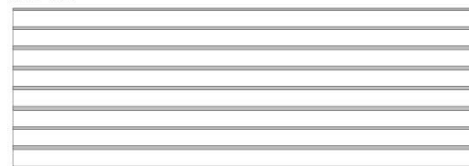
AG36-432



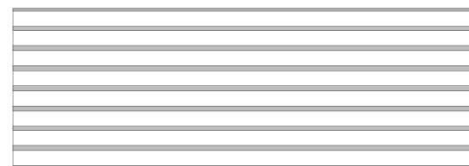
AG18-216



AG19-316



AG20-416



Material Sizes

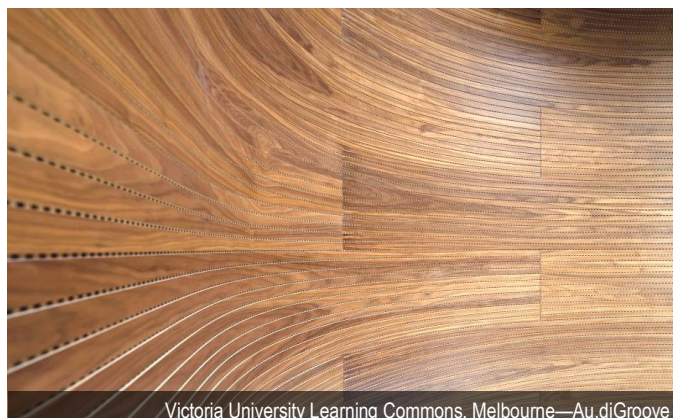
- Standard nominal sizes
 - Thickness: 19mm (3/4")
 - Width: 192mm (7-9/16")
 - Length: 2438mm (8') and 3048mm (10')
- Veneers over 2438mm (8') long are subject to availability
- Contact Atkar Technical Staff for additional material sizes and custom configurations, such as panels & ceiling tiles.

Finish Options

- Natural or Reconstituted Veneers with clear or stain finish
- Paints

Substrates

- MDF
- MDF fire rated (FR MDF)
- MDF moisture resistant (MR MDF)



Victoria University Learning Commons, Melbourne—Au.diGroove

Au.diGroove™ data sheet

Installation System

- Au.diClip system—for use the tongue & groove planks
 - Clips may be screwed directly to furring, strapping, or T-bar
 - Clips have twist-clip features, and can be twisted-fixed to T-bar
- Alternative systems for custom configurations.

Joining Options

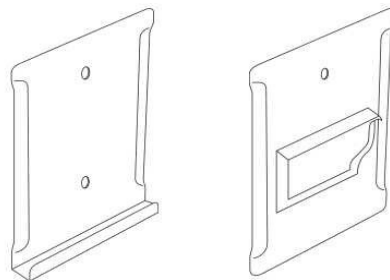
- Tongue & groove installation provides seamless appearance
- Various trim profiles available

Au.diClip

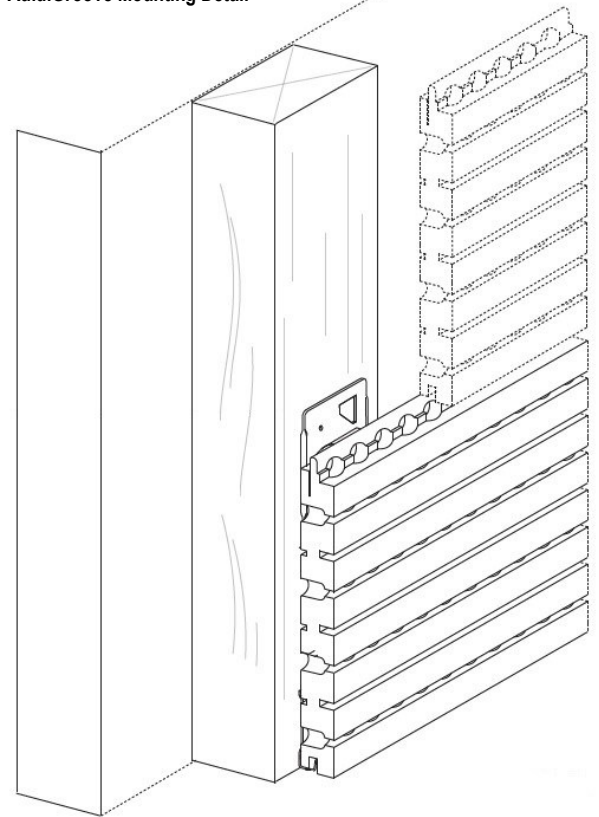
The Au.diGroove Installation system only requires two simple components as shown here. All standard plank deliveries include these fixing components supplied in sufficient quantities to complete the installation.

Starter Clip (left) - Direct fix to wood or metal furring for wall & ceiling installations. For the first row of planks only.

Mounting Clip (right) - Direct fix to wood or metal furring for wall & ceiling installations. For all rows of planks.



Au.diGroove Mounting Detail



Acoustics

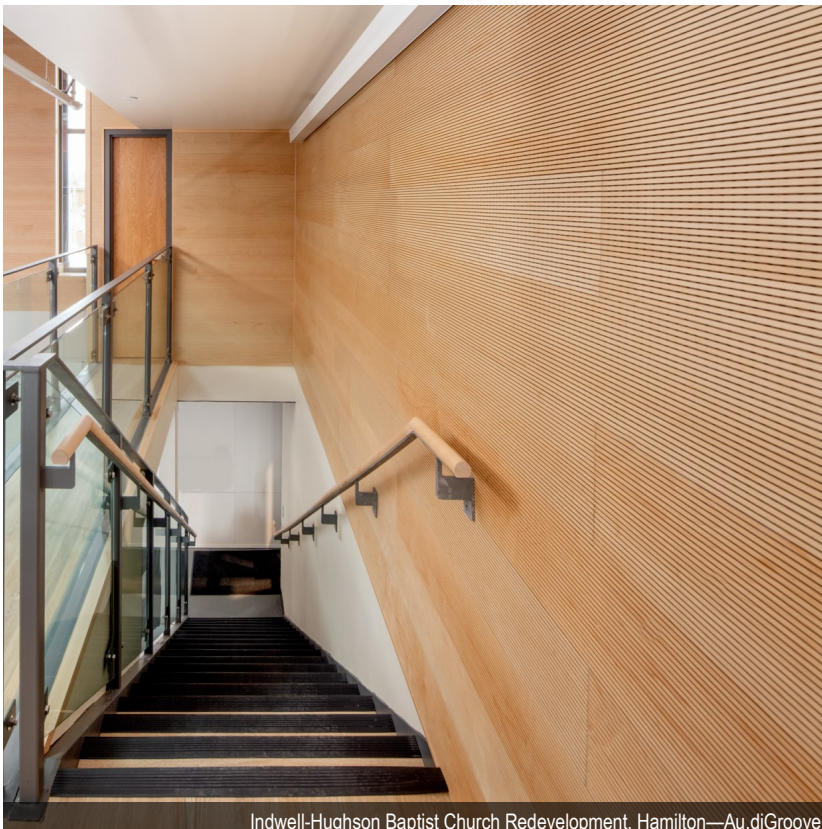
Au.diGroove provides an ideal combination of outstanding acoustic control and visual appeal. Its unique low profile yet efficient design makes it one of the most innovative and effective sound control products available. You should leave at least a 90mm gap between the plank and the wall/ceiling to ensure optimal acoustic performance. Up to 0.90NRC can be achieved through the use of air gaps, acoustic insulation, or a combination of both.

Sustainability

Refer to Environmental Data Sheet. Consult Atkar Technical Staff to determine which LEED credits will be available for your project.

Installation Considerations

- Staggered plank layout (like flooring) are recommended
- 2-3mm expansion joint is recommended
- When cutting planks, consider the location of perforations on the back of the plank
- The natural range of colours & grain patterns can be sorted per room/elevation, or can be mixed



Indwell-Hughson Baptist Church Redevelopment, Hamilton—Au.diGroove

Due to continual product improvement, the information in this publication is subject to alteration without notice.